

## HEP RESIDENCE KAĞITHANE - 2+1 APARTMENT / RESIDENCE Istanbul / Kağıthane

ةقش - عيبلل 272,000 \$ | 87 m2 Istanbul / Kağıthane



فرغلا دد : 2  
نولاصلال دد : 1  
تامامحل دد : 1  
لكيهلا عون : ةقش  
ةديجة ةراجة ةمالة : ةلودلا لكيه  
مادختسالال عسو : غراف  
لكيهلا بنواج : برغ  
لامش  
بونج  
قرشلا



İsmail Can

Phone +90 542-811 80 80

Mobile Phone +90 542-811  
80 80



REALTY GALAXY

Phone +90 542-811 80 80

Mobile Phone +90 533-382  
39 79

Fax +90 212-855 74 75

Yavuz Sultan Selim Bulvarı

Büyükkçekmece /

Büyükkçekmece

34528 , Istanbul

Advert No:f-494589-888

---

- \* عقوقملا يف ءانبل سراح ءئابرهكل دلوم ءةضرألا تازهلل داضم ءازلزل مطنم مواقم دءصم : ىنبم قىرل راذنا ءاچارك ءلسملا ءناسرل دءصملا ءفر ءايملا نازخ
- \* ءلفء ءهقم ءنلولبل زاع ءطءم ءرصم ATM ءافطأةضور قوسء زكرم : ءطءملا ءقطنملا ءءامولءم ءسردم ءصرعم ءهلسءلا زكرم ءبء زكرم ءةلدءص ءهلدءص ءرءصم امنءس ءرسم ءهءة قىءسوم ءءءنم بءلم ءءكرام ءةئوناء ءسردم ءلمءء نولاص ءرفاوك ءضور ءرءءفاك ءةئءافطا ءةئءاءءب ءسردم ءرءءب بءبء ءءمءء ءءقءاوسألا ءةلزنملا ءفشءسم مءطم دءربل بءءم
- \* ءمءءلا ءالصاوملا نم بءرق ءرءءسلا قىرءلا نم بءرءلاب ءةءءملا ءالطا مءءلا ءراشلا ءلء بءرق : نءم ءةءءملا طسو نم ءبءقم ءلء TEM نم بءرءلاب روفسو بلاء روءءءلا نم بءرءلاب

Advert No:f-494589-888



Advert No:f-494589-888





**A BLOCK-1A7**  
FLOOR:2,3,4,5,6,7,8

**1+1 APARTMENT**  
GROSS: 89,3 m<sup>2</sup>

- ENTRANCE:  
**4,60 m<sup>2</sup>**

---

- LIVING ROOM :  
**19,01 m<sup>2</sup>**

---

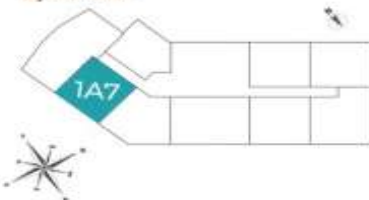
- KITCHEN:  
**5,20 m<sup>2</sup>**

---

- M. BEDROOM:  
**14,40 m<sup>2</sup>**

---

- BATHROOM:  
**3,80 m<sup>2</sup>**



**B BLOCK - 1B2**  
FLOOR:1,2,3,4,5,6,7,8

**1+1 APARTMENT**  
GROSS: 90,9 m<sup>2</sup>

- ENTRANCE:  
**5,66 m<sup>2</sup>**

---

- LIVING ROOM + KITCHEN:  
**24,49 m<sup>2</sup>**

---

- BEDROOM:  
**13,50 m<sup>2</sup>**

---

- BATHROOM:  
**4,11 m<sup>2</sup>**



**A BLOCK - 1A9**  
FLOOR:1,3,4,5,6,7,8

**1+1 APARTMENT**  
GROSS: 86,17 m<sup>2</sup>

- ENTRANCE:  
**5,66 m<sup>2</sup>**

---

- LIVING ROOM:  
**16,42 m<sup>2</sup>**

---

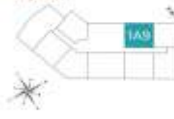
- KITCHEN:  
**5,87 m<sup>2</sup>**

---

- BATHROOM:  
**4,11 m<sup>2</sup>**

---

- M.BEDROOM:  
**12,24 m<sup>2</sup>**



**A BLOCK - 1A6**  
FLOOR:1,3,4,5,6,7,8

**1+1 APARTMENT**  
GROSS: 73,97 m<sup>2</sup>

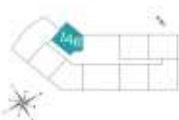
- LIVING ROOM + KITCHEN:  
**19,01 m<sup>2</sup>**

---

- M. BEDROOM:  
**11,20 m<sup>2</sup>**

---

- BATHROOM:  
**3,60 m<sup>2</sup>**



**B BLOCK - 1B4**  
FLOOR:1,2,3,4,5,6,7,8

**1+1 APARTMENT**  
GROSS: 90,9 m<sup>2</sup>

- ENTRANCE:  
**5,66 m<sup>2</sup>**

---

- LIVING ROOM + KITCHEN:  
**24,49 m<sup>2</sup>**

---

- BEDROOM:  
**13,50 m<sup>2</sup>**

---

- BATHROOM:  
**4,11 m<sup>2</sup>**



Advert No:f-494589-888

**B BLOCK - 1B1**  
FLOOR:12,4A,5A,6A

**1+1 APARTMENT**  
GROSS: 85,78 m<sup>2</sup>

ENTRANCE: 5,66 m<sup>2</sup>  
LIVING ROOM + KITCHEN: 22,26 m<sup>2</sup>  
BEDROOM: 12,24 m<sup>2</sup>  
BATHROOM: 4,11 m<sup>2</sup>




**A BLOCK - 1A8**  
FLOOR:12,4A,5A,7B

**1+1 APARTMENT**  
GROSS: 90,89 m<sup>2</sup>

ENTRANCE: 5,30 m<sup>2</sup>  
LIVING ROOM + KITCHEN: 24,30 m<sup>2</sup>  
H BEDROOM: 14,40 m<sup>2</sup>  
BATHROOM: 3,80 m<sup>2</sup>




**A BLOCK - 1A5**  
FLOOR:1

**1+1 APARTMENT**  
GROSS: 77,54 m<sup>2</sup>

ENTRANCE: 5,66 m<sup>2</sup>  
LIVING ROOM + KITCHEN: 18,91 m<sup>2</sup>  
BEDROOM: 9,15 m<sup>2</sup>  
BATHROOM: 4,40 m<sup>2</sup>




**B BLOCK - 1B3**  
FLOOR:12,4A,5A,7B

**1+1 APARTMENT**  
GROSS: 85,78 m<sup>2</sup>

ENTRANCE: 5,66 m<sup>2</sup>  
LIVING ROOM + KITCHEN: 22,26 m<sup>2</sup>  
BEDROOM: 12,24 m<sup>2</sup>  
BATHROOM: 4,11 m<sup>2</sup>




**A BLOCK - 1A10**  
FLOOR:12,4A,5A,7B

**1+1 APARTMENT**  
GROSS: 91,31 m<sup>2</sup>

ENTRANCE: 5,66 m<sup>2</sup>  
LIVING ROOM + KITCHEN: 24,49 m<sup>2</sup>  
H BEDROOM: 13,50 m<sup>2</sup>  
BATHROOM: 4,11 m<sup>2</sup>