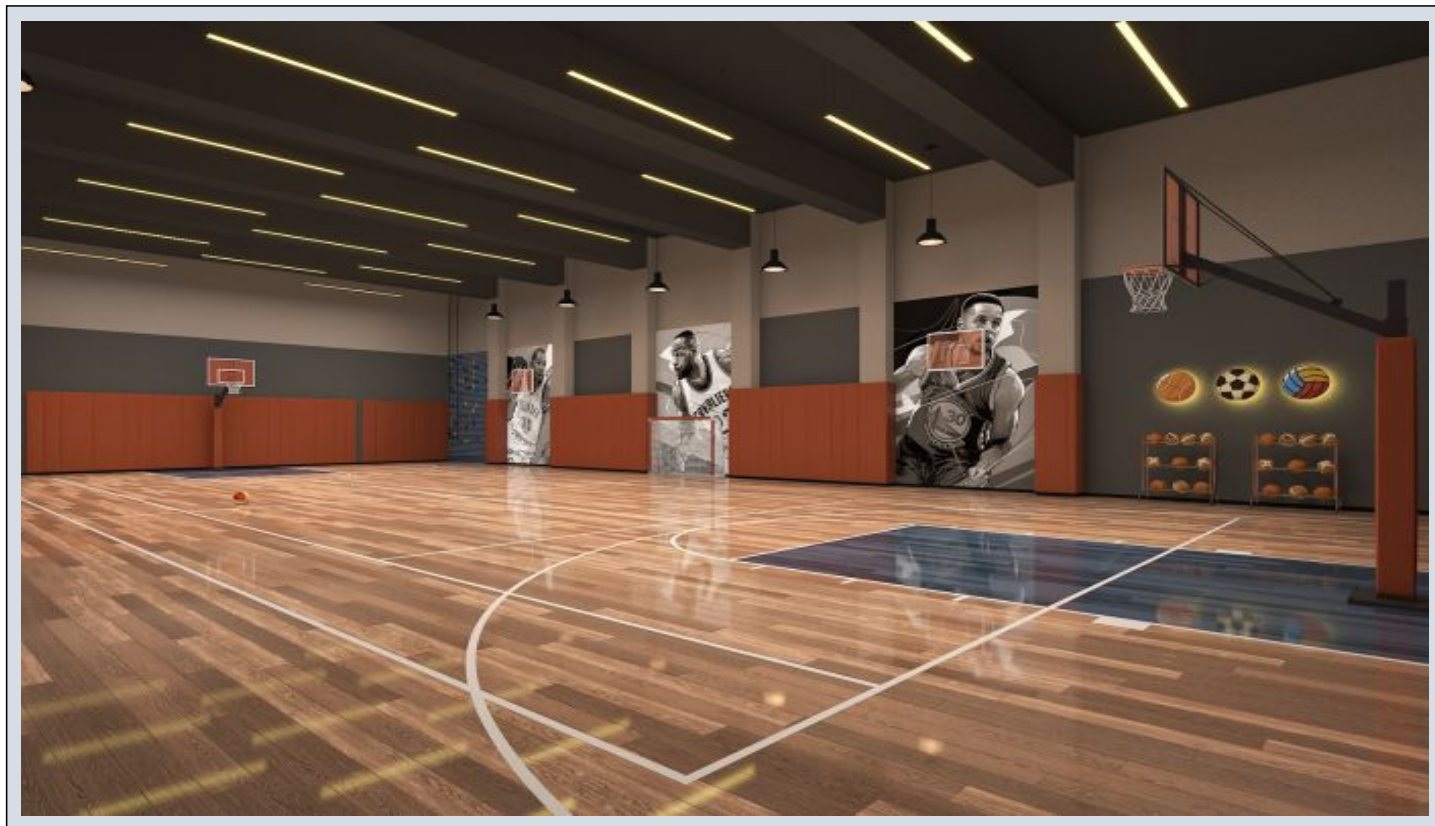


## Next Level Kemer - 5.5+1 Istanbul / Eyüp

Продажа - квартира 79,780,000 TL | 338 m2 Istanbul / Eyüp



Кол-во комнат : 5  
Кол-во гостиных : 2  
Кол-во ванных комнат : 3  
Тип объекта : Квартира  
Статус объекта : Новый(ая)  
Статус использования : Пустой(ая)



İsmail Can

Phone +90 542-811 80 80

Mobile Phone +90 542-811  
80 80



REALTY GALAXY

Phone +90 542-811 80 80

Mobile Phone +90 533-382  
39 79

Fax +90 212-855 74 75

Yavuz Sultan Selim Bulvarı

Büyükkçekmece /

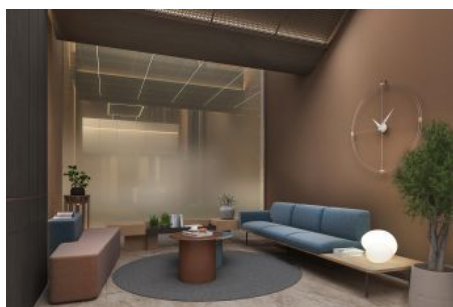
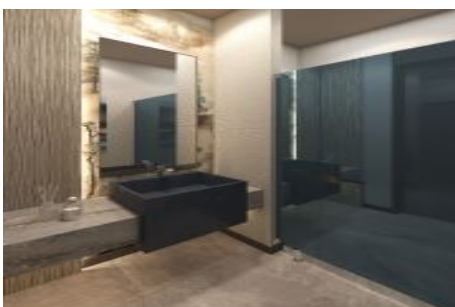
Büyükkçekmece

34528 , Istanbul

Advert No:f-494589-1255



Advert No:f-494589-1255



**G BLOK / 4.KAT - ÇATI PİYESİ 5,5+1 (C)**

**NO: 47**

5,5+1	NET
1. SALON	46,37 m <sup>2</sup>
2. MUTFAK	17,51 m <sup>2</sup>
3. ANTRE 1	6,10 m <sup>2</sup>
4. WC	3,06 m <sup>2</sup>
5. MERDİVEN	5,43 m <sup>2</sup>
6. ANTRE 2	6,16 m <sup>2</sup>
7. KORİDOR	10,24 m <sup>2</sup>
8. EBEVEYN YATAK ODASI	18,80 m <sup>2</sup>
9. GİYİME ODASI	5,51 m <sup>2</sup>
10. YATAK ODASI 1	11,75 m <sup>2</sup>
11. GİYİME ODASI	3,11 m <sup>2</sup>
12. YATAK ODASI 2	13,07 m <sup>2</sup>
13. YATAK ODASI 3	12,52 m <sup>2</sup>
14. YATAK ODASI 4	12,69 m <sup>2</sup>
15. YARDIMCI ODASI	5,99 m <sup>2</sup>
16. EBEVEYN BANYO	4,39 m <sup>2</sup>
17. YATAK ODASI 1 BANYO	4,89 m <sup>2</sup>
18. YARDIMCI ODASI BANYO	2,94 m <sup>2</sup>
19. BANYO	4,16 m <sup>2</sup>
20. ÇAMAŞIR ODASI/DOLABI	2,71 m <sup>2</sup>

<b>KAPALI NET ALAN</b>	<b>197,20 m<sup>2</sup></b>
BALKON	13,96 m <sup>2</sup>
VERANDA (MUTFAK)	14,23 m <sup>2</sup>
VERANDA (SALON)	22,44 m <sup>2</sup>
<b>SATIŞA ESAS BRÜT ALAN</b>	<b>330,58 m<sup>2</sup></b>
BAHÇE	22,86 m <sup>2</sup>
DEPO TAHSİS	9,40 m <sup>2</sup>
<b>BRÜT KULLANIM ALAN</b>	<b>367,67 m<sup>2</sup></b>



Tüm görsel çizimler tanıtım ve bilgi amaçlıdır. Pasifik GYO projede gerekli gördüğü değişiklik yapabilir.

PASİFİK GYO

**G BLOK / 4.KAT - ÇATI PİYESİ 5,5+1 (B)**

**NO: 45**

5,5+1	NET
1. SALON	46,37 m <sup>2</sup>
2. MUTFAK	17,51 m <sup>2</sup>
3. ANTRE 1	6,10 m <sup>2</sup>
4. WC	3,06 m <sup>2</sup>
5. MERDİVEN	5,43 m <sup>2</sup>
6. ANTRE 2	6,16 m <sup>2</sup>
7. KORİDOR	10,24 m <sup>2</sup>
8. EBEVEYN YATAK ODASI	18,80 m <sup>2</sup>
9. GİYİME ODASI	5,51 m <sup>2</sup>
10. YATAK ODASI 1	11,75 m <sup>2</sup>
11. GİYİME ODASI	3,11 m <sup>2</sup>
12. YATAK ODASI 2	13,07 m <sup>2</sup>
13. YATAK ODASI 3	12,52 m <sup>2</sup>
14. YATAK ODASI 4	12,69 m <sup>2</sup>
15. YARDIMCI ODASI	5,99 m <sup>2</sup>
16. EBEVEYN BANYO	4,39 m <sup>2</sup>
17. YATAK ODASI 1 BANYO	4,89 m <sup>2</sup>
18. YARDIMCI ODASI BANYO	2,94 m <sup>2</sup>
19. BANYO	4,16 m <sup>2</sup>
20. ÇAMAŞIR ODASI/DOLABI	2,71 m <sup>2</sup>

<b>KAPALI NET ALAN</b>	<b>197,20 m<sup>2</sup></b>
BALKON	13,96 m <sup>2</sup>
VERANDA (MUTFAK)	14,23 m <sup>2</sup>
VERANDA (SALON)	22,44 m <sup>2</sup>
<b>SATIŞA ESAS BRÜT ALAN</b>	<b>330,58 m<sup>2</sup></b>
BAHÇE	22,86 m <sup>2</sup>
DEPO TAHSİS	9,40 m <sup>2</sup>
<b>BRÜT KULLANIM ALAN</b>	<b>367,67 m<sup>2</sup></b>



Tüm görsel çizimler tanıtım ve bilgi amaçlıdır. Pasifik GYO projede gerekli gördüğü değişiklik yapabilir.

PASİFİK GYO