

## NIVAK FLORYA - 5+1 Istanbul / Bakırköy

For Sale - Apartment 3,500,000 \$ | 384 m2 Istanbul / Bakırköy



# Rooms : 5  
# Saloons : 1  
# Baths : 2  
Type of Property : Apartment Flat  
Property Condition : Brand New  
Usage Status : Empty  
Heating : Central Heating  
Heating Type : Natural Gas  
Balcony Number : 1  
Toilet Number : 2  
Deed Status : Title Deed with Floor Easement  
Available to Bank Credit : Yes



İsmail Can

Phone +90 542-811 80 80

Mobile Phone +90 542-811  
80 80



REALTY GALAXY

Phone +90 542-811 80 80

Mobile Phone +90 533-382  
39 79

Fax +90 212-855 74 75

Yavuz Sultan Selim Bulvarı

Büyükkçekmece /

Büyükkçekmece

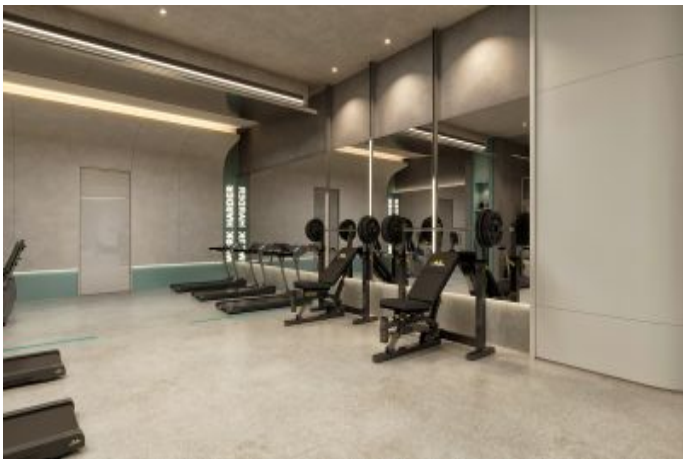
34528 , Istanbul

Advert No:f-494589-996

---

- \* Internal Properties : Alarm, Balcony, White-Goods, Shower cabin, With master bathroom, Stove, Formica Kitchen, Closet, Ready made kitchen, Double glazing, Cable TV / satellite, Covered Balcony, Custom Design Kitchen, Parquet, Ceramic Ground, Security System, PVC Coated,
- \* Building : Earthquake Resistant, Fiber Internet, Heat Proofing, Furniture Elevator, High Entrance, Sound Isolation,
- \* Environment : Shopping Center, Kindergarten, ATM, Gas Station, Cafe, Drugstore / Medical, Entertainment Center, Fair, Elementary School, Cafeteria, Coiffure & Beauty Center, High School, Market, Massage Saloon, Game Park, Police Station, Post Office, Veterinary, School,
- \* Compound : Children Swimming Pool, Fitness Center, Security, Jogging, Parking - Outdoor, Parking - Indoor, Social Facility, Gym, Tennis, Jogging / Walking Areas, Swimming Pool, Swimming Pool (Indoor), Sauna (General), Garden - Private, Security Camera,
- \* Location : Near the Sea, Nature View, City View, Close to Marmaray,

Advert No:f-494589-996



Advert No:f-494589-996



Advert No:f-494589-996

## C BLOK

### 5+1 DAİRE TİP D



01 Giriş Holü	14.87 m <sup>2</sup>
02 Salon	59.30 m <sup>2</sup>
03 Mutfak	25.66 m <sup>2</sup>
04 Yandama Odası	11.56 m <sup>2</sup>
05 Yandama Banyosu	3.88 m <sup>2</sup>
06 WC	3.84 m <sup>2</sup>
07 Camdan Odası	3.68 m <sup>2</sup>
08 Banyo	5.01 m <sup>2</sup>
09 Banyo	4.47 m <sup>2</sup>
10 Yatak Odası	17.40 m <sup>2</sup>
11 Yatak Odası	15.75 m <sup>2</sup>
12 Koridor	11.88 m <sup>2</sup>
13 Ekv. Yatak Odası	32.73 m <sup>2</sup>
14 Ekv. Banyo	12.59 m <sup>2</sup>
15 Oturma Odası	17.02 m <sup>2</sup>
16 Balkon	32.54 m <sup>2</sup>
17 Balkon	3.42 m <sup>2</sup>
18 Balkon	3.93 m <sup>2</sup>

**Net Alan (Balkon hariç)** 239.58 m<sup>2</sup>  
**Brüt Alan\*** 345.37 m<sup>2</sup>  
**Satışa Esas Brüt Alan\*\*** 369.43 m<sup>2</sup>

\*Net alan büyüme bölümüne ait tüm masrafların toplamıdır. (Sıkıyıkıyalar)  
 \*\*Satışa esas brüt alan büyüme bölümünün brüt alanına örtük alanlar ile diğer projelere ait olduğu dağandır.

## B BLOK

### 5+1 DAİRE TİP B



01 Giriş Holü	14.87 m <sup>2</sup>
02 Salon	59.30 m <sup>2</sup>
03 Mutfak	25.66 m <sup>2</sup>
04 Yandama Odası	11.56 m <sup>2</sup>
05 Yandama Banyosu	3.88 m <sup>2</sup>
06 WC	3.84 m <sup>2</sup>
07 Camdan Odası	3.68 m <sup>2</sup>
08 Banyo	5.01 m <sup>2</sup>
09 Banyo	4.47 m <sup>2</sup>
10 Yatak Odası	17.40 m <sup>2</sup>
11 Yatak Odası	15.75 m <sup>2</sup>
12 Koridor	11.88 m <sup>2</sup>
13 Ekv. Yatak Odası	32.73 m <sup>2</sup>
14 Ekv. Banyo	12.59 m <sup>2</sup>
15 Oturma Odası	17.02 m <sup>2</sup>
16 Balkon	32.54 m <sup>2</sup>
17 Balkon	3.42 m <sup>2</sup>
18 Balkon	3.93 m <sup>2</sup>

**Net Alan (Balkon hariç)** 239.58 m<sup>2</sup>  
**Brüt Alan\*** 345.37 m<sup>2</sup>  
**Satışa Esas Brüt Alan\*\*** 369.43 m<sup>2</sup>

## A BLOK

### 5+1 DAİRE TİP A



01 Giriş Holü	14.87 m <sup>2</sup>
02 Salon	59.30 m <sup>2</sup>
03 Mutfak	25.66 m <sup>2</sup>
04 Yandama Odası	11.56 m <sup>2</sup>
05 Yandama Banyosu	3.88 m <sup>2</sup>
06 WC	3.84 m <sup>2</sup>
07 Camdan Odası	3.68 m <sup>2</sup>
08 Banyo	5.01 m <sup>2</sup>
09 Banyo	4.47 m <sup>2</sup>
10 Yatak Odası	17.40 m <sup>2</sup>
11 Yatak Odası	15.75 m <sup>2</sup>
12 Koridor	11.88 m <sup>2</sup>
13 Ekv. Yatak Odası	32.73 m <sup>2</sup>
14 Ekv. Banyo	12.59 m <sup>2</sup>
15 Oturma Odası	17.02 m <sup>2</sup>
16 Balkon	32.54 m <sup>2</sup>
17 Balkon	3.42 m <sup>2</sup>
18 Balkon	3.93 m <sup>2</sup>

**Net Alan (Balkon hariç)** 239.58 m<sup>2</sup>  
**Brüt Alan\*** 345.37 m<sup>2</sup>  
**Satışa Esas Brüt Alan\*\*** 369.43 m<sup>2</sup>

## C BLOK

### 5+1 DAİRE TİP C-T



01 Giriş Holü	14.87 m <sup>2</sup>
02 Salon	59.30 m <sup>2</sup>
03 Mutfak	25.66 m <sup>2</sup>
04 Yandama Odası	11.56 m <sup>2</sup>
05 Yandama Banyosu	3.88 m <sup>2</sup>
06 WC	3.84 m <sup>2</sup>
07 Camdan Odası	3.68 m <sup>2</sup>
08 Banyo	5.01 m <sup>2</sup>
09 Banyo	4.47 m <sup>2</sup>
10 Yatak Odası	17.40 m <sup>2</sup>
11 Yatak Odası	15.75 m <sup>2</sup>
12 Koridor	11.88 m <sup>2</sup>
13 Ekv. Yatak Odası	32.73 m <sup>2</sup>
14 Ekv. Banyo	12.59 m <sup>2</sup>
15 Oturma Odası	17.02 m <sup>2</sup>
16 Balkon	32.54 m <sup>2</sup>
17 Balkon	3.42 m <sup>2</sup>
18 Balkon	3.93 m <sup>2</sup>

**Net Alan (Balkon hariç)** 239.58 m<sup>2</sup>  
**Brüt Alan\*** 345.37 m<sup>2</sup>  
**Satışa Esas Brüt Alan\*\*** 369.43 m<sup>2</sup>

## B BLOK

### 5+1 DAİRE TİP B-T



01 Giriş Holü	14.87 m <sup>2</sup>
02 Salon	59.30 m <sup>2</sup>
03 Mutfak	25.66 m <sup>2</sup>
04 Yandama Odası	11.56 m <sup>2</sup>
05 Yandama Banyosu	3.88 m <sup>2</sup>
06 WC	3.84 m <sup>2</sup>
07 Camdan Odası	3.68 m <sup>2</sup>
08 Banyo	5.01 m <sup>2</sup>
09 Banyo	4.47 m <sup>2</sup>
10 Yatak Odası	17.40 m <sup>2</sup>
11 Yatak Odası	15.75 m <sup>2</sup>
12 Koridor	11.88 m <sup>2</sup>
13 Ekv. Yatak Odası	32.73 m <sup>2</sup>
14 Ekv. Banyo	12.59 m <sup>2</sup>
15 Oturma Odası	17.02 m <sup>2</sup>
16 Balkon	32.54 m <sup>2</sup>
17 Balkon	3.42 m <sup>2</sup>
18 Balkon	3.93 m <sup>2</sup>

**Net Alan (Balkon hariç)** 239.58 m<sup>2</sup>  
**Brüt Alan\*** 345.37 m<sup>2</sup>  
**Satışa Esas Brüt Alan\*\*** 369.43 m<sup>2</sup>

