

## EMLAK KONUT SEMT BAHÇEKENT - 1+1 APARTMENT / RESİDENCE Istanbul / Başakşehir

For Sale - Apartment 2,100,000 TL | 68 m2 Istanbul / Başakşehir



# Rooms : 1

# Saloons : 1

# Baths : 1

Type of Property : Apartment Flat

Property Condition : Brand New

Property Direction : East

West

North

South



İsmail Can

Phone +90 542-811 80 80

Mobile Phone +90 542-811  
80 80



REALTY GALAXY

Phone +90 542-811 80 80

Mobile Phone +90 533-382  
39 79

Fax +90 212-855 74 75

Yavuz Sultan Selim Bulvarı

Büyükkçekmece /

Büyükkçekmece

34528 , Istanbul

Advert No:f-494589-955

---

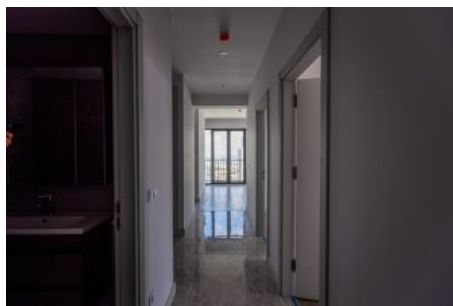
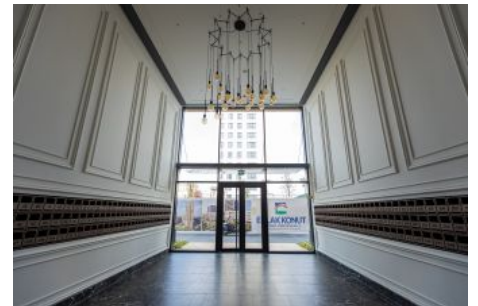
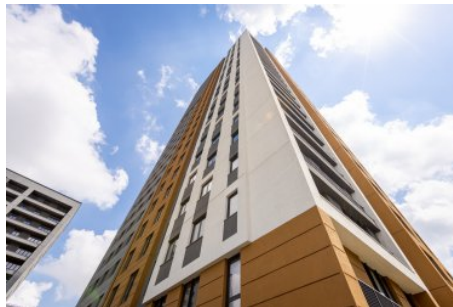
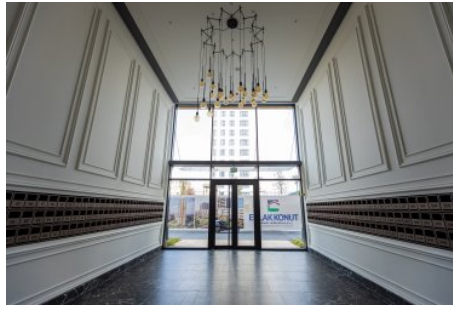
- \* Internal Properties : Alarm, Balcony, Steel Door, Diaphone with screen, Security System,
- \* Building : Elevator / Lift, Earthquake Regulation Proof, Doorman, Ground Survey, Reinforced Concrete, Parking, Fire Alarm,
- \* Environment : Shopping Center, Kindergarten, ATM, Bank, Gas Station, Cafe, Drugstore, Drugstore / Medical, Entertainment Center, Elementary School, Cafeteria, Nursery, Coiffure & Beauty Center, High School, Market, Game Park, Park, Post Office, Restaurant, Health Center, District Bazaar, University, Veterinary, School,
- \* Compound : Children Swimming Pool, Fitness Center, Security, Parking - Outdoor, Parking - Indoor, Social Facility, Gym, Jogging / Walking Areas, Swimming Pool, Swimming Pool (Indoor), Security Camera,

Advert No:f-494589-955





Advert No:f-494589-955

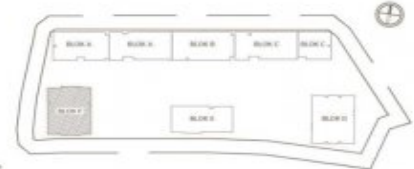


Advert No:f-494589-955



### 1P G3 F BLOK 3+1 DAİRE PLANI

Giriş holü	:	8,57 m <sup>2</sup>
Salon	:	23,17 m <sup>2</sup>
Mutfak	:	8,84 m <sup>2</sup>
Yatak odası 1	:	8,09 m <sup>2</sup>
Yatak odası 2	:	8,11 m <sup>2</sup>
Ebeveyn yatak odası	:	14,70 m <sup>2</sup>
Ebeveyn banyo	:	3,11 m <sup>2</sup>
Banyo	:	3,37 m <sup>2</sup>
Çamaşır odası	:	1,85 m <sup>2</sup>
Koridor	:	3,43 m <sup>2</sup>
Balkon 1	:	11,81 m <sup>2</sup>
Balkon 2	:	5,68 m <sup>2</sup> - 5,90 m <sup>2</sup>
Balkon 3	:	7,68 m <sup>2</sup>
Balkon 4	:	4,91 m <sup>2</sup> - 5,30 m <sup>2</sup>
Balkon 5	:	6,71 m <sup>2</sup>
Balkon 4 (açık balkon)	:	4,38 m <sup>2</sup>



Net alan : 120,01 m<sup>2</sup> - 120,44 m<sup>2</sup> Balkon dahil toplam net alan : 124,39 m<sup>2</sup> - 124,82 m<sup>2</sup>  
Açık Balkon : 4,38 m<sup>2</sup> Satışa esas brüt alan : 176,24 m<sup>2</sup>

Tüm ölçüler yapıya göre değişebilir. Ölçüler, ölçümler ve çizimler sadece referans amaçlıdır. Keskin çizimler için lütfen inceleme yapınız.



### 1P D D BLOK 1+1 DAİRE PLANI

Giriş holü	:	1,28 m <sup>2</sup>
Salon - mutfak	:	16,45 m <sup>2</sup>
Yatak odası	:	5,05 m <sup>2</sup>
Banyo	:	3,12 m <sup>2</sup>
Çamaşır odası	:	0,29 m <sup>2</sup>
WC	:	1,22 m <sup>2</sup>
Balkon 1	:	1,41 m <sup>2</sup>
Balkon 2	:	1,20 m <sup>2</sup>



Net alan : 22,22 m<sup>2</sup> Balkon dahil toplam net alan : 22,22 m<sup>2</sup>  
Açık Balkon : 0,00 m<sup>2</sup> Satışa esas brüt alan : 27,00 m<sup>2</sup>



### 1P C1 D BLOK 1+1 DAİRE PLANI

Giriş holü	:	2,22 m <sup>2</sup>
Salon - mutfak	:	16,71 m <sup>2</sup>
Yatak odası	:	5,05 m <sup>2</sup>
Banyo	:	3,38 m <sup>2</sup>
Çamaşır odası	:	0,71 m <sup>2</sup>
Balkon 1	:	1,28 m <sup>2</sup> - 1,50 m <sup>2</sup>
Balkon 2	:	4,28 m <sup>2</sup>



Net alan : 29,97 m<sup>2</sup> - 31,42 m<sup>2</sup> Balkon dahil toplam net alan : 33,97 m<sup>2</sup> - 35,22 m<sup>2</sup>  
Açık Balkon : 0,00 m<sup>2</sup> Satışa esas brüt alan : 46,28 m<sup>2</sup>



### 1P B1 E BLOK 4+1 DAİRE PLANI

Giriş holü	:	10,28 m <sup>2</sup>
Salon	:	32,04 m <sup>2</sup>
Mutfak	:	10,02 m <sup>2</sup>
Yatak odası 1	:	8,08 m <sup>2</sup>
Yatak odası 2	:	8,08 m <sup>2</sup>
Çamaşır odası	:	10,22 m <sup>2</sup>
Ebeveyn yatak odası	:	13,08 m <sup>2</sup>
Ebeveyn banyo	:	3,14 m <sup>2</sup>
Banyo	:	3,36 m <sup>2</sup>
Çamaşır odası	:	0,60 m <sup>2</sup>
Koridor	:	4,72 m <sup>2</sup>
Balkon 1	:	7,32 m <sup>2</sup>
Balkon 2	:	10,08 m <sup>2</sup>
Balkon 3	:	1,14 m <sup>2</sup>
Balkon 4	:	3,08 m <sup>2</sup>
Balkon 5	:	3,89 m <sup>2</sup> - 4,00 m <sup>2</sup>
Balkon 6	:	4,28 m <sup>2</sup>
Balkon 7 (açık balkon)	:	6,72 m <sup>2</sup>



Net alan : 133,01 m<sup>2</sup> - 138,04 m<sup>2</sup> Balkon dahil toplam net alan : 137,09 m<sup>2</sup> - 142,25 m<sup>2</sup>  
Açık Balkon : 6,72 m<sup>2</sup> Satışa esas brüt alan : 202,00 m<sup>2</sup>



### 1P I2 F BLOK 2+1 DAİRE PLANI

Giriş holü	:	3,28 m <sup>2</sup>
Salon	:	22,22 m <sup>2</sup>
Mutfak	:	8,84 m <sup>2</sup>
Yatak odası	:	8,84 m <sup>2</sup>
Ebeveyn yatak odası	:	14,70 m <sup>2</sup>
Ebeveyn banyo	:	3,37 m <sup>2</sup>
Banyo	:	3,37 m <sup>2</sup>
Çamaşır odası	:	1,85 m <sup>2</sup>
Koridor	:	3,43 m <sup>2</sup>
Balkon 1	:	11,81 m <sup>2</sup>
Balkon 2	:	5,68 m <sup>2</sup> - 5,90 m <sup>2</sup>
Balkon 3	:	7,68 m <sup>2</sup>
Balkon 4	:	4,91 m <sup>2</sup> - 5,30 m <sup>2</sup>
Balkon 5	:	6,71 m <sup>2</sup>



Net alan : 70,22 m<sup>2</sup> Balkon dahil toplam net alan : 75,09 m<sup>2</sup>  
Açık Balkon : 0,00 m<sup>2</sup> Satışa esas brüt alan : 110,00 m<sup>2</sup>



