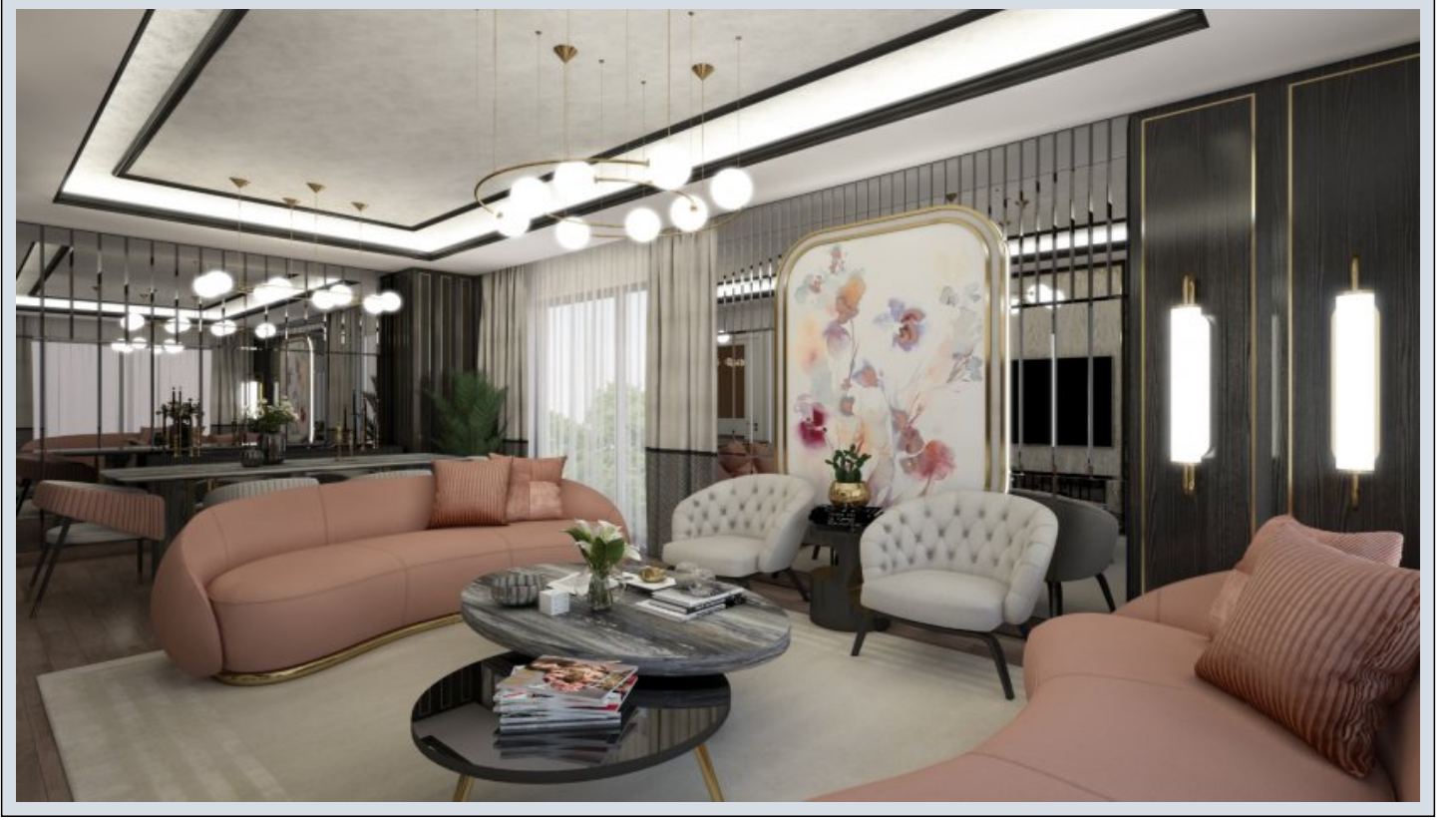


## Alya 4 Mevsim - 2+1 İstanbul / Beylikdüzü

Satılık - Apartman Dairesi 145,000 \$ | 96 m2 İstanbul / Beylikdüzü



Oda Sayısı : 2  
Salon Sayısı : 1  
Banyo Sayısı : 2  
Yapının Şekli : Apartman Dairesi  
Yapının Durumu : Sıfır  
Kullanım Durumu : Boş  
Isıtma : Merkezi Sistem (Isı payı Ölçer)



İsmail Can

Phone +90 542-811 80 80

Mobile Phone +90 542-811  
80 80



REALTY GALAXY

Phone +90 542-811 80 80

Mobile Phone +90 533-382  
39 79

Fax +90 212-855 74 75

Yavuz Sultan Selim Bulvarı

Büyükkçekmece /

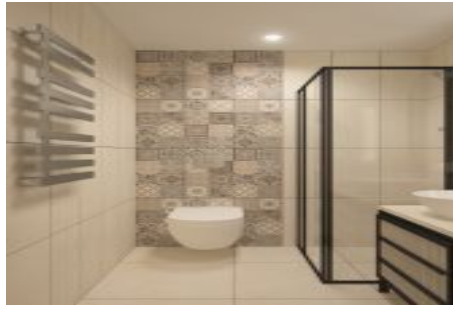
Büyükkçekmece

34528 , İstanbul

Advert No:f-494589-1238



Advert No:f-494589-1238



Advert No:f-494589-1238



**Apartment Plan**





**Key Plan**



**Key Section**



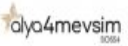
**Situation Plan**

**2+1 DAIRE**  
**Brüt - 111,77 m<sup>2</sup>**  
**Net - 72,65 m<sup>2</sup>**

- ① Antre-Kor - 8,85 m<sup>2</sup>
- ② Salon - 20,00 m<sup>2</sup>
- ③ Mutfak - 9,00 m<sup>2</sup>
- ④ Yatak O - 9,05 m<sup>2</sup>
- ⑤ E.Yatak O - 15,00 m<sup>2</sup>
- ⑥ E.Banyo - 3,20 m<sup>2</sup>
- ⑦ Çamaşır O - 0,70 m<sup>2</sup>
- ⑧ Banyo - 3,65 m<sup>2</sup>
- ⑨ Balkon - 3,20 m<sup>2</sup>



**Apartment Plan**






**Key Plan**



**Key Section**



**Situation Plan**

**2+1 DAIRE**  
**Brüt - 114,62 m<sup>2</sup>**  
**Net - 74,50 m<sup>2</sup>**

- ① Antre-Kor - 8,60 m<sup>2</sup>
- ② Mutfak - 10,20 m<sup>2</sup>
- ③ Salon - 22,00 m<sup>2</sup>
- ④ Yatak O - 10,55 m<sup>2</sup>
- ⑤ Çamaşır O - 0,60 m<sup>2</sup>
- ⑥ E.Yatak O - 13,30 m<sup>2</sup>
- ⑦ E.Banyo - 3,10 m<sup>2</sup>
- ⑧ Banyo - 3,45 m<sup>2</sup>
- ⑨ Balkon - 2,70 m<sup>2</sup>



**Apartment Plan**





**Key Plan**



**Key Section**



**Situation Plan**

**2+1 DAIRE**  
**Brüt - 113,85 m<sup>2</sup>**  
**Net - 74,00 m<sup>2</sup>**

- ① Antre-Kor - 8,60 m<sup>2</sup>
- ② Mutfak - 10,20 m<sup>2</sup>
- ③ Salon - 21,55 m<sup>2</sup>
- ④ Yatak O - 10,20 m<sup>2</sup>
- ⑤ Çamaşır O - 0,60 m<sup>2</sup>
- ⑥ E.Yatak O - 14,15 m<sup>2</sup>
- ⑦ E.Banyo - 2,65 m<sup>2</sup>
- ⑧ Banyo - 3,45 m<sup>2</sup>
- ⑨ Balkon - 2,70 m<sup>2</sup>